

Providence St. Joseph Health

## Providence St. Joseph Health Digital Commons

---

Special Pathogens Newsletters

Special Pathogens Program

---

12-2022

### **December 2022: Region 10 Emerging Special Pathogen Treatment Center (RESPTC) at Providence Sacred Heart Medical Center & Children's Hospital**

Providence - Special Pathogens Program

Follow this and additional works at: [https://digitalcommons.providence.org/special\\_pathogens\\_newsletters](https://digitalcommons.providence.org/special_pathogens_newsletters)



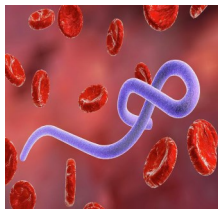
Part of the Pathology Commons

---

# REGION 10 SPECIAL PATHOGENS NEWSLETTER

Region 10 Emerging Special Pathogen Treatment Center (RESPTC) at Providence Sacred Heart Medical Center & Children's Hospital

DECEMBER 2022



Current Outbreaks



Plans, Training, & Exercises



NSPS



Workgroup Updates

## Current Outbreaks

### Mpox:

- 82,147 cases worldwide/65 deaths; 29,711 cases in U.S./20 deaths.
- WHO recommending Mpox as new name for monkeypox disease to address racist and stigmatizing language. CDC adopting new language and updating their site.
- Both names will be used simultaneously for 1 year as the monkeypox term is phased out.

### Ebola Sudan in Uganda:

- 142 confirmed cases (21 probable)/56 confirmed deaths (21 probable).
- Uganda discharged its last known Ebola patient last week.
- Last confirmed case was a stillborn on 11/27/22, born to a mother who had recovered from Ebola.
- The outbreak will be declared over 42 days (2 incubation periods) from the last potential exposure to the last case. Undocumented cases remain a concern.

#### Resources:

- ◇ [CDC Information for Healthcare Professionals](#)
- ◇ [MGH Monkeypox Toolkit](#)
- ◇ [NETEC Monkeypox resources](#)
- ◇ [Managing Solid Waste Contaminated with a Category A Infectious Substance](#)

## Plans, Training, & Exercises

Thanks to everyone who has recently provided input to the HHS Region 10 Emerging Special Pathogen Concept of Operations (CONOPS). As most of you know, we exercised that in a virtual Tabletop Exercise (TTX) on Monday, December 5th and had a great turn-out across the Region with just over 120 people joining us. Wow! As we work regionally as well as with the other regional treatment centers and partners across the nation, let's keep in mind the components of developing and improving this "special pathogen" capability often referred to as the Preparedness Cycle which involves: Planning, Organizing/Equipping, Training, Exercising (POETE).

The CONOPS TTX was successful in that we had great participation across HHS Region 10, an overview and education provided about the revised CONOPS, good discussions in all 4 state break out groups, and good learnings about the importance of coordination, collaboration, communication, and cooperation. The TTX and discussion highlighted: the limited capability within Region 10 to care for a confirmed patient with a special pathogen for their duration of care; challenges facing all hospitals, public health, and EMS agencies to maintain preparedness for patients with special pathogens; and the importance to integrate this work as practically as possible alongside other preparedness efforts.

Since the last newsletter, we conducted an Evacuation TTX using a scenario that the Special Pathogen Unit (SPU) had to be evacuated as a result of a fire. This TTX is a low likelihood scenario and one that would be challenging and impactful to our hospital. We had several Mystery Patient Drills scheduled and had to reschedule those due to the ongoing pediatric surge and ongoing strain on our, and most all hospitals. We are also well underway with the Full Scale Exercise (FSE) aligned with our NETEC Readiness Consultation and are working with MultiCare, Spokane Regional Health District (SRHD), AMR Spokane, WA State Department of Health, ASPR Region 10 and a few other partners through a robust exercise design process.

## Region 10 Requests for Special Pathogen Preparedness Assistance

Providence Sacred Heart Medical Center & Children's Hospital (PSHMC&CH), as the HHS Region 10 Emerging Special Pathogens Treatment Center (RESPTC) is committed to providing education and training, resources, and assistance for special pathogens preparedness to healthcare partners in the region. PSHMC&CH partners with the National Emerging Special Pathogens Training and Education Center (NETEC) on readiness assessment requests in Region 10 and incorporates NETEC resources into support provided. Examples of Support are:

- On-site visit for special pathogens preparedness
  - ⇒ Evaluate workflow, evaluate PPE ensemble & donning/doffing, lab capability, Category A waste management
- Support for on-site training with specialized care team
  - ⇒ Assist to create and implement training for biocontainment team
- Planning assistance for integration of special pathogen preparedness into organizations' all hazard emergency management plans. For example: Annexes, Standard Operating Procedures, Job Aides, Checklists, etc.

If your organization would like to request support, please follow this outlined process:

- Determine education and/or training needs at your organization
- Send a brief outline of identified needs and potential timeline to Christa Arguinchona at [christa.arguinchona@providence.org](mailto:christa.arguinchona@providence.org)
- Christa to schedule a 30-minute virtual meeting to discuss next steps

## National Special Pathogen System of Care (NSPS)

What will the new Care Delivery Network (CDN) look like which is replacing the Tiered Hospital system language?

- **Tier D: All Health Care Facilities**
- **Tier C: Assessment Centers**
- **Tier B: Treatment Centers**
- **Tier A: Specialize Care Facilities, i.e. RESPTC**

## National Emergency Medical Network Strategy Meeting

We continue to meet monthly since the HHS/ASPR led two-day strategy meeting in Frederick, Maryland, to discuss an initial framework for a National Health Care Readiness System in July. Participants continue to expand and include representatives from ASPR, the Regional Disaster Health Response System (RDHRS), the Regional Emerging Special Pathogen Treatment Centers (RESPTCs), the Pediatric Centers of Excellence (PCOE), the National Emerging Special Pathogens Training and Education Center (NETEC), the National Emergency Tele-Critical Care Network (NETCCN), HRSA's Emergency Medical Services for Children (EMSC) program and Regional Pediatric Pandemic Network (RPPN), in addition to several other key health care stakeholders. Participants highlighted several components needed in a National Health Care Readiness System to include: identification of several accelerators and opportunities, challenges in building a National system, and highlighted next steps and considerations for future implementation.

## Workgroups

We are looking forward to progressing regional collaboration with these workgroups.

### **Region 10 Special Pathogen Transport/EMS workgroup:**

- Purpose is to promote planning and collaboration across HHS Region 10 to support EMS and transport for emerging pathogens to support the region.
- Meeting monthly (most likely moving to bi-monthly) on the 1st Thursday from 3-4 pm PST
- Join us Thursday, March 2, 2023 from 3-4 pm PST and hear Dr./Colonel Elizabeth Schnaubelt who will present on the US Air Force efforts to increase aeromedical EMS transport for special pathogens. Colonel Schnaubelt leads the Center for Sustainment of Trauma Readiness Skills (C-STARS) Omaha, a collaboration between UNMC, Nebraska Medicine, and the Air Force Research Laboratory's School of Aerospace Medicine. See this article that describes this project—[C-STARS holds inaugural biocontainment care course](#).

### **Region 10 Special Pathogen Clinical workgroup:**

- Purpose is to promote collaboration around staffing challenges, team recruitment and engagement, and training and education opportunities.
- Currently focusing on team building, recruitment, retention, and training and education needs.
- Meeting bimonthly on Thursdays from 1-2 pm PDT.

## Recent webinar's, trainings and tools from NETEC

- [Identify, Isolate, Inform: Assessment, management and placement of PUI](#)
- [Preparing Frontline Health Care Workers for Ebola Town Hall](#)
- [Ebola Checklist for Frontline Health Care Facilities](#)
- [Consulting for Hospitals](#)
- [Consulting for Emergency Medical Services \(EMS\)](#)
- [Consulting for Long-Term Care](#)
- [Infection Prevention Learning Journey](#)

## Special Pathogen Resources



[National Emerging Special Pathogen Training and Education Center](#)



[Frontline Hospital Planning Guide Special Pathogens](#)



[ASPR EMS Infectious Disease Playbook](#)



[EMS Special Pathogens Operational Readiness Self-Assessment \(SPORSA\)](#)



[Center for Infectious Disease Research and Policy \(CIDRAP\)](#)

**Fun Factoid:** From the Writer's Almanac—On Dec 9th in 1979\*, a panel of scientists declared the smallpox virus to be eradicated. It's the first and only disease to be driven to extinction through human efforts.

The disease itself has probably been around since at least 10,000 B.C.E. Evidence of smallpox scars has been found on Egyptian mummies, and the decline of the Roman Empire coincides with a particularly bad outbreak that claimed 7 million people. It spread from northern Africa throughout Europe and Asia, and came to the New World with Spanish explorers.

\* Depending on the source, this date varies some.