

Providence

Providence Digital Commons

Articles, Abstracts, and Reports

2-5-2020

Integrative network modeling reveals mechanisms underlying T cell exhaustion.

Hamid Bolouri

Mary Young

Joshua Beilke

Rebecca Johnson

Brian Fox

See next page for additional authors

Follow this and additional works at: <https://digitalcommons.providence.org/publications>



Part of the [Genetics and Genomics Commons](#)

Recommended Citation

Bolouri, Hamid; Young, Mary; Beilke, Joshua; Johnson, Rebecca; Fox, Brian; Huang, Lu; Santini, Cristina Costa; Hill, Christopher Mark; Vries, Anne-Renee van der Vuurst de; Shannon, Paul; Dervan, Andrew; Sivakumar, Pallavur; Trotter, Matthew; Bassett, Douglas; and Ratushny, Alexander, "Integrative network modeling reveals mechanisms underlying T cell exhaustion." (2020). *Articles, Abstracts, and Reports*. 2789.

<https://digitalcommons.providence.org/publications/2789>

This Article is brought to you for free and open access by Providence Digital Commons. It has been accepted for inclusion in Articles, Abstracts, and Reports by an authorized administrator of Providence Digital Commons. For more information, please contact digitalcommons@providence.org.

Authors

Hamid Bolouri, Mary Young, Joshua Beilke, Rebecca Johnson, Brian Fox, Lu Huang, Cristina Costa Santini, Christopher Mark Hill, Anne-Renee van der Vuurst de Vries, Paul Shannon, Andrew Dervan, Pallavur Sivakumar, Matthew Trotter, Douglas Bassett, and Alexander Ratushny

OPEN

Integrative network modeling reveals mechanisms underlying T cell exhaustion

Hamid Bolouri^{1*}, Mary Young², Joshua Beilke³, Rebecca Johnson², Brian Fox², Lu Huang⁴, Cristina Costa Santini⁵, Christopher Mark Hill², Anne-Renee van der Vuurst de Vries², Paul T. Shannon⁶, Andrew Dervan², Pallavur Sivakumar², Matthew Trotter⁵, Douglas Bassett² & Alexander Ratushny^{2*}

Failure to clear antigens causes CD8⁺ T cells to become increasingly hypo-functional, a state known as exhaustion. We combined manually extracted information from published literature with gene expression data from diverse model systems to infer a set of molecular regulatory interactions that underpin exhaustion. Topological analysis and simulation modeling of the network suggests CD8⁺ T cells undergo 2 major transitions in state following stimulation. The time cells spend in the earlier pro-memory/proliferative (PP) state is a fixed and inherent property of the network structure. Transition to the second state is necessary for exhaustion. Combining insights from network topology analysis and simulation modeling, we predict the extent to which each node in our network drives cells towards an exhausted state. We demonstrate the utility of our approach by experimentally testing the prediction that drug-induced interference with EZH2 function increases the proportion of pro-memory/proliferative cells in the early days post-activation.

Diverse mechanisms can limit T cell responses to tumors and immunotherapies¹ (summarized in Supplementary Fig. S1). In particular, CD8⁺ T cells stimulated without the appropriate co-stimulatory signals can become anergic, while telomere erosion and/or DNA damage can result in T cell senescence² over periods spanning months/years. T cell exhaustion (TCE) occurs in spite of physiologically appropriate stimulation when stimulation is prolonged to periods of weeks², as is often the case for tumor-infiltrating lymphocytes and engineered T cells. TCE is defined by high expression of inhibitory receptors, and lowered capacity for proliferation, cytokine production, cytotoxic activity, and memory formation². To date, immune checkpoint inhibitors targeting inhibitory receptors and other immunotherapies have shown great success in only subsets of patients across multiple cancers³. The limited efficacy of checkpoint inhibitors and their adverse effects in some patients^{4,5} suggest a need for a better understanding of TCE and the development of new TCE inhibitors. A better understanding of the mechanisms underlying TCE may improve the efficacy and reduce the adverse effects of immune checkpoint inhibitors, chimeric antigen receptor (CAR), engineered T cell receptor (TCR), and T cell engager immunotherapies³.

In response to acute infections, naïve and memory CD8⁺ T cells both undergo a stereotyped series of transcriptional state changes, summarized in Fig. 1a. CD8⁺ T cells receiving prolonged stimulation by chronic infections or cancer antigens undergo a qualitatively similar set of state changes (Fig. 1b), but become increasingly exhausted over time.

Importantly, the early stages of T cell activation and exhaustion are not steady states (i.e. self-maintaining), but require continued stimulation by antigen and associated co-stimulatory signals (hereinafter referred to as Ag for brevity). Prolonged stimulation eventually drives T cells into irreversible (steady state) exhaustion, maintained by epigenetic changes⁶. How a single regulatory input (Ag presence/absence) can reliably drive the multiple transitional state changes that occur during prolonged stimulation (Fig. 1) is currently poorly understood.

In recent years, a number of groundbreaking studies have identified key regulatory genes and interactions underlying CD8⁺ TCE^{7–12}. In spite of the differences in model systems and experimental protocols, these studies

¹Center for Systems Immunology, Benaroya Research Institute, Seattle, WA, 98101, USA. ²Bristol-Myers Squibb, Summit, NJ, USA. ³Formerly Celgene Corporation, Seattle, WA, USA. ⁴Formerly Celgene Institute for Translational Research Europe (CITRE), Seville, Spain. ⁵Celgene Institute for Translational Research Europe (CITRE), a Bristol-Myers Squibb Company, Summit, NJ, USA. ⁶Institute for Systems Biology, Seattle, WA, 98109, USA. *email: HBolouri@fhcrc.org; aratushny@celgene.com

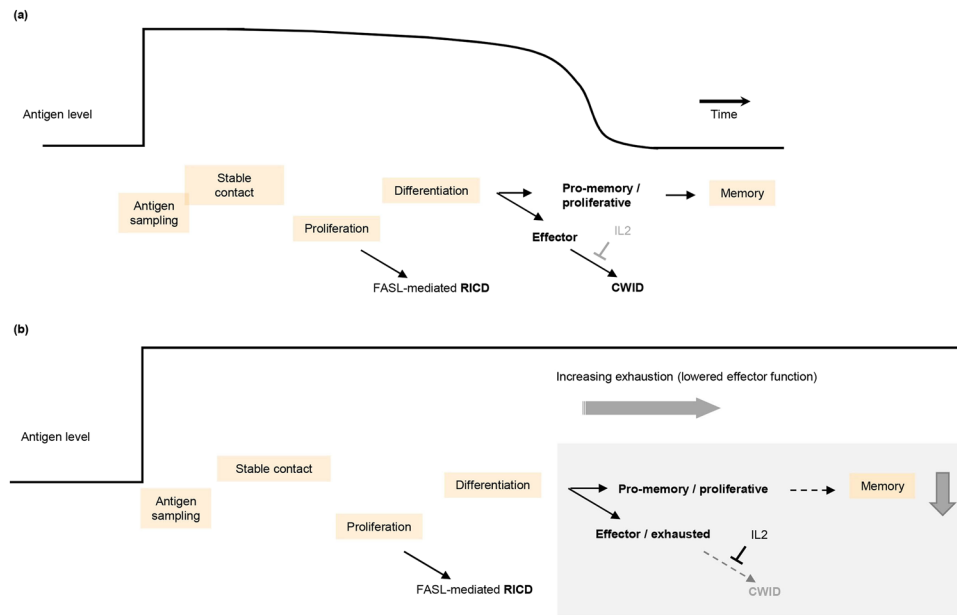


Figure 1. Multiple cellular state transitions underlie CD8⁺ T cell responses to acute and chronic co-stimulation. **(a)** Literature-based model of the acute response. CD8⁺ T cell activation starts with a complex and highly regulated process of antigen sampling (brief cell-cell contacts) that minimizes the risk of a response to self-antigens while sensitively detecting matching non-self antigens. Identification of a target cell results in the formation of a stable immune synapse and the activation of the T cell receptor (TCR) and its associated co-receptors (known as signals 2 and 3). TCR co-stimulation in turn leads to rapid and robust T cell proliferation. The magnitude of T cell amplification is controlled via a FAS/FASL mediated apoptotic signaling process known as restimulation-induced cell death (RICD). Activated CD8⁺ T cells differentiate into memory precursor and short-lived effector cells. Effector cells require cytokines such as IL2 for survival, and undergo cell death when antigen clearance leads to loss of cytokine signaling, a process known as cytokine withdrawal-induced cell death (CWID). After antigen clearance, memory CD8⁺ T cells are formed from the pro-memory/proliferative (PP) population in a process that takes several weeks. **(b)** In response to chronic co-stimulation, CD8⁺ T cells undergo state changes similar to **(a)**. Prolonged activation reduces the proportion of memory-precursor cells, while persistence of cytokine signaling antagonizes CWID and leads to a hypo-functional effector/exhausted state.

reveal a common set of regulatory interactions underlying TCE. However, all known genes and gene products whose expression or modification state have been associated with TCE also play a role in normal (acute) T cell activation¹³. We hypothesized that TCE may arise from changes in diverse gene regulatory interactions rather than the dysregulation of a single gene.

Here, we present a manually curated, literature-based, and data-driven network of gene regulatory interactions underpinning TCE in CD8⁺ cells. Using diverse published data, we show that the TCE network accurately captures the gene expression states of CD8⁺ T cells in both chronic infection and tumor settings.

Analysis of functionally distinct network motifs reveals multiple overlapping interactions, implementing overlying sets of functional modules (system building blocks) that appear to reinforce each other's function, and lead to robust, highly stereotypic cellular state changes following activation. A simple mathematical model derived from the network's functional modules suggests exhaustion arises because the duration of time that activated CD8⁺ T cells spend in a memory-progenitor state is independent of the duration of stimulation, whereas differentiation is prolonged with stimulation. We use our 2-state TCE network model to predict the phenotypic effects of targeted drugs and provide experimental evidence in support of this approach.

Results

We initially used manual curation of the literature to establish a network of key molecular interactions that are believed to underlie TCE (Supplementary Table S1 and Supplementary Fig. S2). We then superimposed onto this network expression levels of each gene at various stages of T cell activation and exhaustion from published datasets (see Methods; example visualizations shown in Supplementary Figs. S3–8).

Next, we calculated fold changes in expression compared to the naïve state and evaluated the fraction of times each interaction exhibited fold changes in source and target genes consistent with the reported sense of the interaction (promoting or inhibitory). At a false discovery rate of ~15% (estimated via permutation testing), only 17 interactions (~3.6%) in the network did not have supportive expression data (see Methods and Supplementary Fig. S9).

Consistent with the observation that all driver genes implicated in TCE are common to, and play similar roles in, exhausted and acute responses, principal component analysis (PCA) of expression data for the genes in the TCE network exhibited similar trajectories for acute and exhausted gene expression profiles. TCE gene sets from previous studies also showed similar trajectories and further support our findings (Supplementary Fig. S10).

In addition to known regulators of TCR stimulation and co-receptor engagement, T cells subjected to repeat stimulation and exhaustion undergo multiple metabolic changes^{14,15}. Indeed, metabolic deprivation can ameliorate T cell activation¹⁶. Consistent with our TCE network findings, analysis of gene expression changes driving metabolic switching during acute and chronic stimulation also suggested similar expression state trajectories for CD8⁺ cells undergoing acute and chronic stimulation (Supplementary Figs. S11 and S12).

Considering that the genes involved in both acute and chronic stimulation are largely the same (as revealed by the literature-based network), and that the trajectories of their expression changes are also similar (as revealed by our gene expression and metabolic analyses), we hypothesized that the differences between acute and chronic T cell responses may lie in the timing of gene expression changes.

To find differences in the relative timing of gene expression changes between acute and chronic responses, we carried out time course gene expression clustering (Supplementary Figs. S13–15) and looked for transcription factors and signaling genes that switch cluster membership (i.e. timing) between acute and chronic settings. This approach identified metabolic changes downstream of *TP53* as differentially regulated in acute and chronic settings. Of the three *TP53* regulatory genes whose expression changes correlated with the TCE network genes, only one gene (CD200-R1, a known T cell suppressor^{17–19}) showed consistently large fold change differences between chronic and acute settings in multiple datasets (Supplementary Fig. S16). However, recent research suggests CD200-R1 activity inhibits T cell responses primarily through CD8⁺ T cell independent pathways^{20–22}.

Network analysis. In contrast to the above findings, a series of alternate logic models of the TCE network (see Methods) all required specific gene activation delays in order to recapitulate the observed sequences of CD8⁺ cell gene expression changes during acute and chronic stimulation (Supplementary Figs. S17–20 and Methods for examples). Feed forward and feedback loops (Supplementary Fig. S21) are widely used to control timing and activity in both biological and engineered systems^{23,24}. Thus, to address how antigen availability can determine a sequence of specifically timed gene expression changes, we searched for feed-forward and feedback motifs in our literature-derived TCE network.

To facilitate loop detection, the initial literature-based TCE network was simplified by collapsing all isoforms of each gene into a single gene symbol (e.g. *NF-κB* instead of *RELB*, *cREL*, etc.) unless a specific isoform was known to play a distinct role in TCE. Similarly, chains of interactions with no incoming or outgoing branches were collapsed into single nodes, and (where possible), members of protein complexes were grouped into single nodes. Finally, genes with no reported downstream targets and unknown regulatory significance were removed. To maximize loop detection, we then carried out a second, more detailed literature review to identify all known interactions of the genes in our reduced literature-based TCE network. The resulting network has 64 nodes and 120 interactions (Supplementary Fig. S22 and Supplementary Table S2).

Genes in the TCE network can be divided into early and late activity classes. Multiple recent studies of TCE have noted the existence of distinct ‘reversible’ and ‘irreversible’ subpopulations of exhausted CD8⁺ T cells^{10–12}. Reversibly exhausted CD8⁺ T cells have been variously defined by high expression levels of *CXCR5*, *TCF-1*, and *BCL6*, and concurrent low expression of *KLRG1*, *BLIMP-1* (*PRDM1*), and *TIM3* (*HAVCR2*)²⁵. They have relatively high proliferative potential and can produce fully functional memory cells²⁵. In contrast, irreversibly exhausted CD8⁺ T cells are defined by the opposite expression pattern and have low proliferative and memory-forming potential.

While performing expression clustering and time course analysis of the TCE network genes, we noticed that markers of ‘reversible exhaustion’ (e.g. high *CXCR5* in LCMV infections, high *TCF-1* in tumor-infiltrating lymphocytes, accompanied with low levels of *KLRG1* and *TIM-3*) overlap with and include pro-memory genes, and exclude genes associated with effector function and ‘irreversible exhaustion’ (Supplementary Fig. S23). Moreover, many genes associated with the reversible exhaustion state are also associated with proliferation (notably *TCF-1*, *MYC*, *NF-κB*, and genes enabling glycolysis). These findings led us to hypothesize that the processes underlying CD8⁺ T cell activation and exhaustion may fall into 2 broad classes: pro-memory and proliferative (PP), versus pro-effector and exhaustion.

Using clustered gene expression time course profiles (Supplementary Figs. S13–15) and consistent with literature reports, we were able to assign the regulatory interactions underlying TCE into 2 groups defining an early, PP, and a later state associated with effector differentiation and function ultimately leading to irreversible exhaustion (EE). The resulting network model is illustrated in Fig. 2. It is important to note that in terms of nodes (i.e. genes/gene products) and interactions, the network in Fig. 2 is identical to that in Supplementary Fig. S22 (i.e. both are visualizations of the citations listed in Supplementary Table S2). The key differences are that the layout and coloring of the network have been manually adjusted to highlight the PP and EE network components and their interactions.

Network motifs identify modular functional building blocks. We next used the 2-state TCE network of Fig. 2 to search for regulatory network motifs and functional building blocks that may explain the state changes of CD8⁺ cells undergoing TCE. A summary of the functional network motifs/building blocks discovered is presented in Fig. 3 and Supplementary Fig. S24.

Mutual inhibition between early and late activation states. Excluding the negative-feedback interactions of the inhibitory receptors, a remarkable 18 out of 23 inhibitory interactions in our TCE network (78%) are between ‘early’ (PP) and ‘late’ (EE) activation genes (Fig. 3a and Supplementary Fig. S24a). Such inhibition can enable the mutual exclusion of these 2 essential activation states in either a graded or bistable manner²⁴. Consistent with this hypothesis, recently published single-cell RNA-seq data⁸ suggest *BCL6* and *BLIMP-1* repress each other in a mutually exclusive manner (Supplementary Fig. S25).

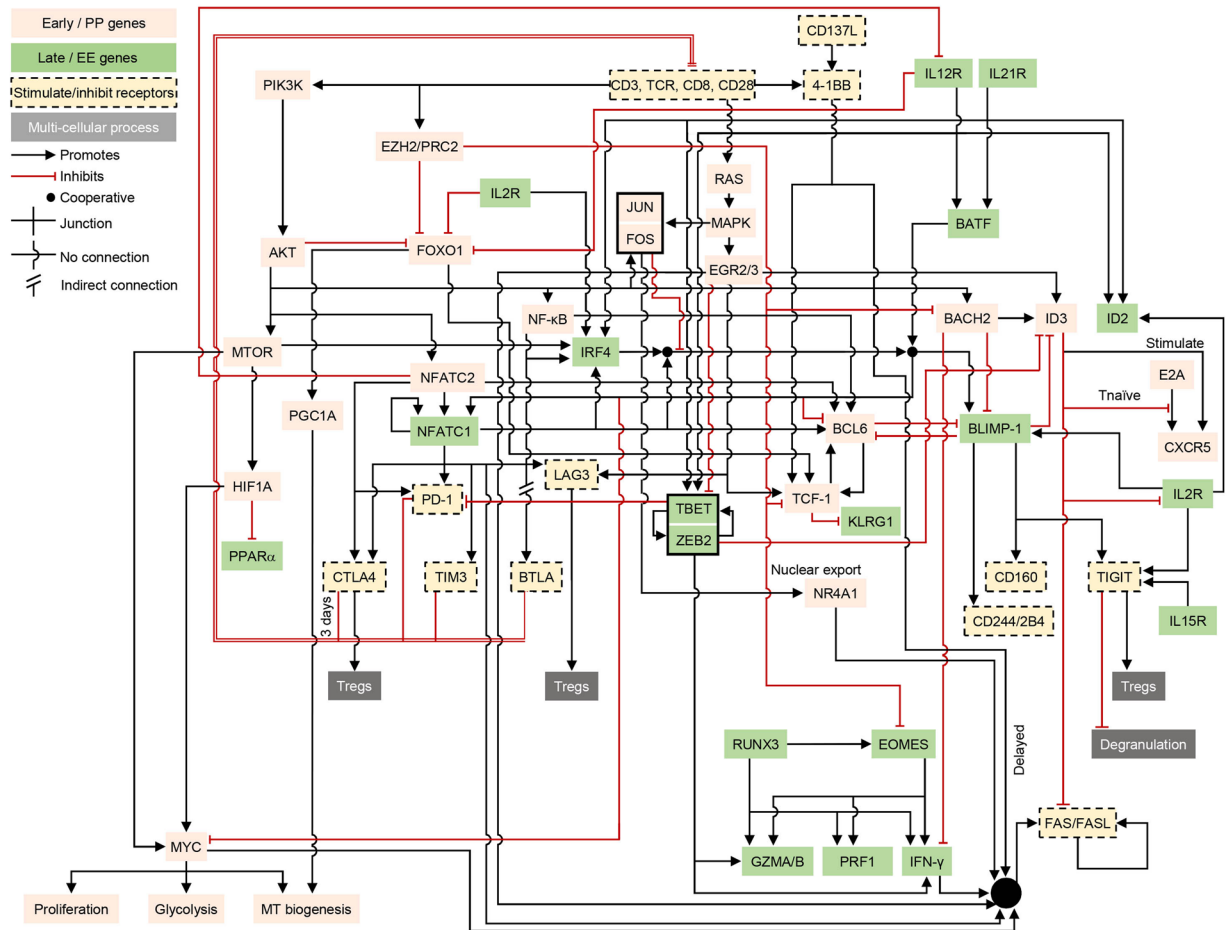


Figure 2. A curated, literature-based network of key regulatory interactions underlying CD8⁺ T cell exhaustion (TCE). Red lines ending in bars indicate inhibition. Black lines ending in arrows indicate activation. Pink network nodes indicate molecules and processes associated with the early pro-memory/proliferative (PP) state. Nodes on a green background represent molecules and processes associated with the late effector/irreversibly exhausted (EE) state. For simplicity, nodes in the network represent both genes and their products and are labeled by their commonly used names across all figures. Inhibitory and related immune receptors are shown on a tan background with dashed borders. In a few cases (e.g. IL2R), a node appears more than once in the network in order to reduce line clutter. The black box around JUN/FOS indicates their cooperative role as AP-1 dimers. Likewise, T-BET and ZEB2 can act cooperatively and are grouped together. The double-edged repressive input onto the T cell receptor (TCR) complex (labeled ‘CD3, TCR, CD8, CD28’) bundles the actions of the inhibitory receptors PD-1, BTLA, CTLA-4, TIM3, and LAG3.

Overlapping incoherent feed-forward loops fix the duration of the pro-memory PP state. In an incoherent feed-forward loop (iFFL), an upstream regulator activates and represses a downstream target via pathways that operate on different timescales²⁶. One characteristic behavior of such regulation is that the downstream target will be turned on (or off) for a fixed duration corresponding to the difference in the timescales of the activating and inhibitory pathways.

As summarized in Fig. 3b and Supplementary Fig. S24b, a set of overlapping iFFLs ensure delayed loss of nuclear FOXO1 protein activity, and concomitant loss of *TCF-1* gene expression. FOXO1 and *TCF-1* are both expressed in naïve and memory T cells^{27,28}. Following T cell stimulation, their expression is abrogated by delayed Polycomb repressor complex 2 (PRC2)-mediated inhibition downstream of TCR signaling (see also Supplementary Table S3)^{29,30}. An additional set of iFFLs involving repression of FOXO1 by signaling downstream of the IL2 and IL12 receptors further reinforces delayed repression of *TCF-1*. Taking these observations together, we hypothesize that the duration of *FOXO1/TCF-1* transcription following stimulation is fixed by the time it takes for TCR-activated PRC2 and signaling pathways to silence the 2 genes. The sequences of early and late regulatory interactions governing *TCF-1* expression are illustrated schematically in Fig. 4a,b.

Focusing on interactions among the ‘early’ genes and cell surface receptors in the TCE network revealed an additional iFFL that regulates the timing of FAS/FASL signaling (Fig. 3b and Supplementary Fig. S24b). Interferon gamma (IFN- γ) signaling, which is required for FAS/FASL activity³¹, is repressed early on by *BACH2*³², which is expressed in naïve CD8⁺ T cells³³ and activated by TCR-mediated signaling (Fig. 4c). At later time points, TCR-activated PRC2 epigenetically represses *BACH2* expression²⁹, thus enabling FAS/FASL activation by IFN- γ (Fig. 4d).

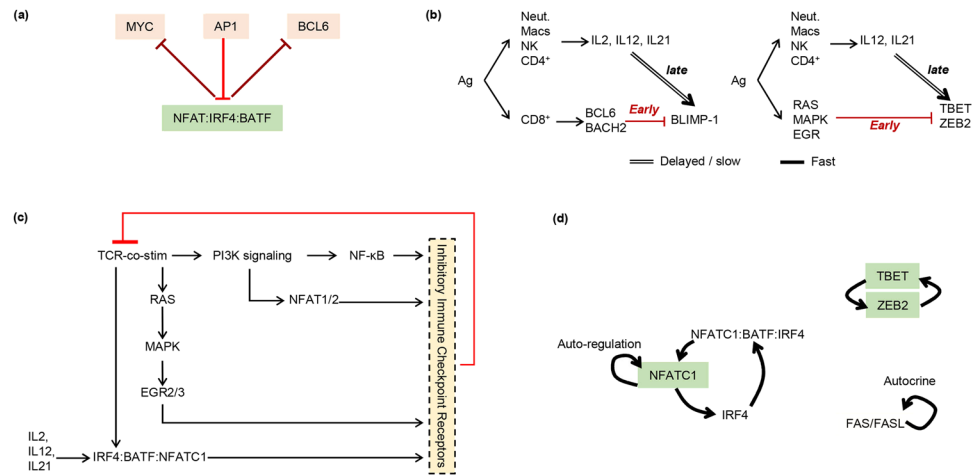


Figure 3. Examples of network motifs in the TCE network. **(a)** There is widespread mutual inhibition between early (PP) and late (EE) state genes, suggesting the 2 states mutually exclude each other. Shown is an example of mutual inhibition interactions between early factors (MYC, API, and BCL6) and the late acting protein complex (NFAT:IRF4;BATF) (for the full list of mutually inhibitory interactions see Supplementary Fig. S24). **(b)** The expression of the PP-state driver gene TCF-1, the onset of restimulation-induced cell death (RICD) via FAS/FASL signaling, and the time of activation of the key EE state genes BLIMP-1 (aka PRDM1), TBET, and ZEB2 are each controlled by multiple, overlapping incoherent feed forward loop network motifs. Double lines mark slow/delayed processes. For simplicity only two examples of subnetworks are shown here (for the full list of subnetworks see Supplementary Fig. S24). **(c)** Inhibitory immune checkpoint receptors implement overlapping negative feedback inhibition of T cell activation. It should be noted that some inhibitory receptors (e.g. CTLA4, LAG3, and TIGIT) additionally exert inhibitory activity via regulatory T cells not shown here to emphasize the negative feedback on CD8/TCR signaling exerted by inhibitory receptors (more detailed representation of this subnetwork is presented in Supplementary Fig. S24). **(d)** Multiple positive feedback loops reinforce and maintain the late effector/irreversible exhaustion (EE) state.

A third set of overlapping iFFLs ensure the delayed activation of the late/effector state genes *TBET*, *ZEB2*, and *BLIMP-1* (Fig. 3b and Supplementary Fig. S24b). Thus, the duration of activity of early/progenitor state (PP) genes, the timing of the activation of the late effector/exhausted state (EE) genes, and the timing of FAS/FASL signaling to limit proliferation, are all controlled by overlapping iFFLs that share many genes and reinforce each other's function in a coordinated, redundantly robust manner.

With the exception of *TCF-1/BCL6* mutual activation, the regulatory interactions of the early-phase genes in the TCE network are mediated entirely by iFFLs. We hypothesize that these iFFLs create a fixed duration time window during which activated T cells proliferate, are in a memory precursor state, and are capable of reinvigoration.

Negative feedback by inhibitory receptors. Negative feedback (Supplementary Fig. S21 and Fig. 3c and Supplementary Fig. S24c) is a well described mechanism for homeostasis. At least 2 distinct sets of negative feedbacks appear to regulate TCE. Firstly, negative feedback via FAS/FASL signaling results in restimulation-induced cell death³⁴ (RICD, Fig. 1) and is thought to limit T cell numbers following activation-induced proliferation³⁴.

In addition, and in contrast to population control via FAS-mediated RICD, negative feedback via inhibitory receptors primarily acts by down-regulating signal transduction downstream of the TCR^{35–40}, and can guard against over-activation of individual T cells. In this context, negative feedback can allow a vigorous early response that is actively down-regulated at later times to avoid over-reacting²³ (Supplementary Figs. S26 and S27).

Positive feedback loops maintain the late EE state. In contrast to the early PP state, the later EE state has no iFFLs and is instead self-reinforced via multiple positive feedback loops (Fig. 3d and Supplementary Fig. S24d). Importantly, such feedback loops stabilize the expression of not only the nodes directly involved in each loop (NFATC1, IRF4, TBET, ZEB2, and BLIMP-1), but also their regulatory targets, which include CTLA4, PD-1, TIM3, LAG3, IFN- γ , GZMA/B, PRF1, FAS/FASL, 2B4, CD160, and TIGIT.

Known interactions are sufficient to explain T cell exhaustion. As noted above (Figs. 3 and 4, and Supplementary Fig. S24), the onset of the late EE state leads to the repression of key drivers of the early PP state. Moreover, the transition between the 2 states occurs at a fixed time post-stimulation dictated by delayed/slow regulatory interactions within iFFLs, and independent of the duration of stimulation. Thus, the longer that T cell stimulation continues, the more time a given CD8⁺ T cell will spend reinforcing its EE state at the cost of pro-memory and proliferative states. Figure 5 presents simulation results illustrating this principle (see Methods for details).

The 2-state TCE model allows prediction of drug effects. To identify optimal targets for counteracting exhaustion, we first computed all downstream targets of each gene in the TCE network (see Methods

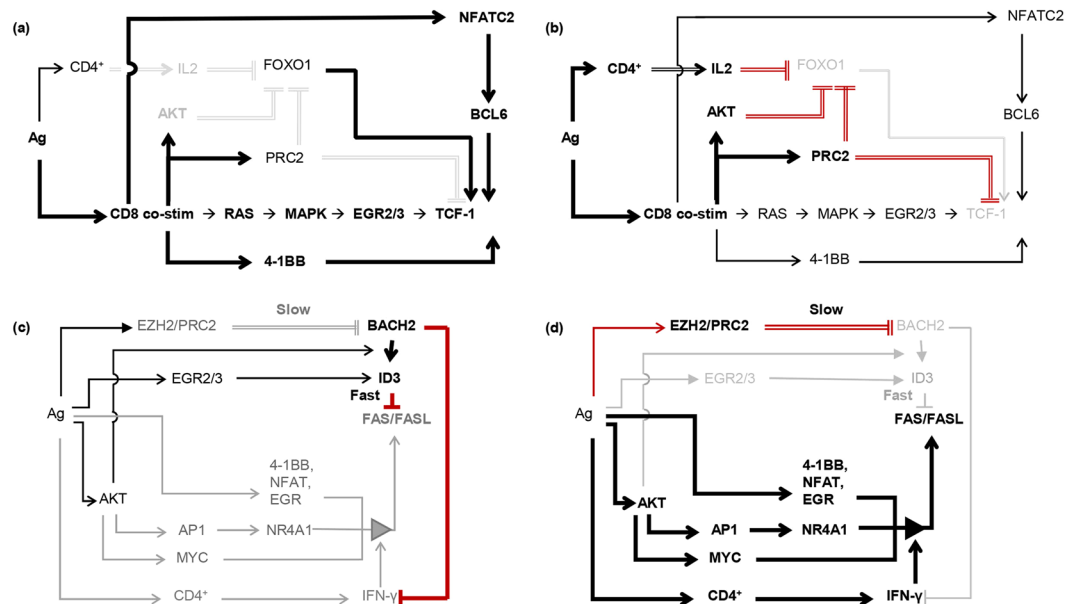


Figure 4. Two-state models of the incoherent feed-forward loops (iFFLs) regulating TCF-1 and FAS/FASL activity. **(a)** The early state of the TCF-1 iFFL. Thick black lines indicate active regulatory interactions. Light gray lines and text indicate inactive interactions and genes. TCF-1 and FOXO1 are expressed in naïve CD8⁺ T cells. TCF-1 expression during early CD8⁺ T cell activation is maintained via direct regulation by FOXO1, and via MAPK signaling activation of ERG2/3, via 4-1BB signaling, and through calcium-activated NFATC2. The 2 repressive regulators of TCF-1, EZH2/PRC2 signaling and PI3K/AKT signaling, are inactive at this stage. AKT activation in stimulated CD8⁺ cells peaks at ~day 5 post-infection⁶³. EZH2/PRC2 activity peaks at around 4 days post-infection³⁰. **(b)** At around 3 days post-infection, AKT represses FOXO1 activity, while PRC2 initiates a chain of events culminating in DNA-methylation and transcriptional shut-down of FOXO1 and TCF-1 genes. IL2 signaling also becomes active around this time and suppresses FOXO1 activity. Thin black lines indicate activating inputs overridden by dominant inhibitory inputs. **(c,d)** illustrate the early and late states of the FAS/FASL signaling iFFL using the same notation as in **(a,b)**. In **(c)**, BACH2 and ID3 are active in naïve and early activated CD8⁺ cells, and block FAS/FASL expression and signaling. At later time points **(d)**, EZH2/PRC2 activity suppresses BACH2/ID3. IFN- γ signaling becomes activated and facilitates activation of FAS/FASL by 4-1BB, NFATs, EGRs, and NR4A1.

for details). Depending on whether an interaction is inhibitory or activating, lowered activity of an upstream regulator will increase or decrease the activity of target genes. To estimate the overall phenotypic effect of an upstream gene, we calculated a pro-PP score by adding the number of up-regulated PP genes to the number of down-regulated EE genes, and a complementary pro-EE score.

As shown in Fig. 6, blocking or reducing the activity of most genes in the TCE network results in exclusively pro-PP or pro-EE predicted effects. A small number of genes appear to impact both PP and EE states because they play distinct pro-PP or pro-EE roles at different times post-stimulation. For example, transcription of *EZH2* (that expresses the core subunit of PRC2) is up-regulated following TCR co-stimulation, peaks at ~1 day post-infection, and is largely back to basal levels by day 7 post-infection³⁰. At the protein level, PRC2 activity peaks around 3–5 days post-infection^{41,42}, at which time EZH2/PRC2 suppresses the already active pro-memory/proliferation genes *FOXO1* and *TCF-1* while suppressing the pro-effector/exhaustion gene *EOMES* (Figs. 6 and 7a–c). Thus, based on the network topology alone, it appears as though EZH2 represses both the PP and EE network states, but time step analysis resolves the apparent contradiction and suggests reduction of EZH2 activity should have exclusively pro-PP effects (because EZH2 is inactive at the times when it could have pro-EE effects).

To test the hypothesis that EZH2 inhibition will increase the early expression of PP state genes without impacting EE state genes, we stimulated blood-derived T cells from 3 volunteers with equal quantities of CD3 and CD28 antibodies *in vitro* for 5 days with and without drug-mediated EZH2 inhibition (see Supplementary Table S3 and Methods for details). As shown in Fig. 7d, quantitative RT-PCR revealed up-regulation of the pro-PP state genes *TCF-1* and *BCL6* in EZH2-inhibited samples, while the EE state markers *FAS* and *GZMB* showed no significant change.

Discussion

The network analysis presented here suggests CD8⁺ TCE arises from an inherent topological property of the network of regulatory interactions that underlie CD8⁺ T cell responses to both acute and prolonged stimulation. Specifically, we presented computational and experimental evidence suggesting that the duration of time CD8⁺ T cells spend in a pro-memory state is fixed by network properties that limit the duration of activity of the pro-memory gene *TCF-1* in a manner independent of the duration of stimulation.

A recently published study used mass cytometry to classify exhausted CD8⁺ T cells into multiple subtypes⁴³. Consistent with our model, Bengsch *et al.*⁴³ report that in HIV infections with a lower viral load and in HIV

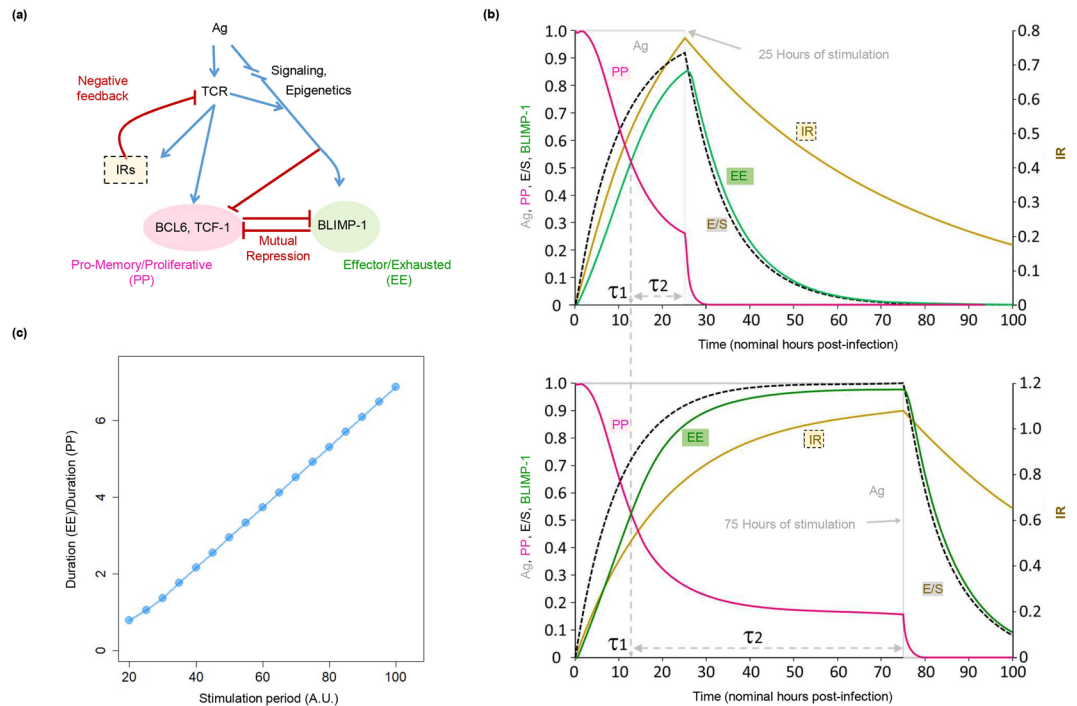


Figure 5. Functional building block-based modeling reveals a mechanism driving T cell exhaustion (TCE). (a) Abstract representation of the overlapping incoherent feed-forward loops (iFFLs) that regulate the timing of expression/repression of key PP and EE state genes *TCF-1/BCL6* and *BLIMP-1*. The 2 states are modeled as being mutually repressive (cf. Fig. 3a and Supplementary Fig. S24a). Additionally, inhibitory immune receptors (IRs) exert negative feedback on T cell receptor (TCR) activity. The overlapping iFFLs create a brief period of fixed length shortly after TCR stimulation, during which PP state driver genes (*TCF-1* and *BCL6*) are active. At the end of this period, PP state genes become repressed, while EE state genes such as *BLIMP-1* are simultaneously activated. A set of ordinary differential equations (ODEs) implementing this model are described in Methods. (b) Simulation results for the model in (a) under nominal ‘acute’ and ‘chronic’ stimulation conditions. The gray line shows the duration of antigen availability (nominally 25 hours for the ‘acute’ model and 75 hours for the ‘chronic’ model). The time at which the red PP-activity curve crosses the green EE-activity curve (τ_1) marks the duration of time the cells spend in the PP state. The period from the end of τ_1 until antigen clearance (labeled τ_2) marks the duration cells spend in the effector/exhausted EE state. Comparison of the 2 simulation runs shows that τ_1 remains constant irrespective of the duration of stimulation, while τ_2 increases with the duration of stimulation. (c) The ratio (τ_2/τ_1) as a function of stimulation period grows in approximate proportion to the total duration of stimulation, suggesting that the proportion of cells in the EE state will increase with prolonged stimulation.

patients on anti-retroviral therapy (i.e. cases with greater immune activity), exhausted T cells have higher expression levels of TCF-1 and/or CXCR5 and appear more functional. Further supporting our model, drug-induced activation of TCF-1 has been shown to block CD8⁺ T cell differentiation and increase proliferation⁴⁴.

The analyses presented here focused on molecules and interactions generally accepted by the research community to play important roles in CD8⁺ T cell responses to acute and chronic stimulation. It is important to note that the approach presented here can be easily extended to predict novel molecules and interactions by extending our literature-based network to include known and predicted protein-protein and protein-DNA interactors of the current network nodes.

Analysis of our literature-based, data-driven, and manually curated TCE network suggests TCE is a highly robust process mediated by multiple redundant and overlapping feedback and feed-forward loops. In addition, diverse, overlapping molecular mechanisms contribute to TCE, including combinatorial regulation by transcription factors, post-translational modifications, protein localization, chromatin state changes, and metabolic reprogramming. Taken together, our analyses are consistent with the view that TCE is not a dysfunctional state, but rather an adaptive response to situations where the immune system fails to clear antigen rapidly. Clinical remediation of TCE will need to overcome multiple, overlapping and redundant regulatory mechanisms, requiring combinatorial interventions.

Methods

Datasets. The following published datasets were downloaded from the NCBI Gene Expression Omnibus (GEO) repository (<https://www.ncbi.nlm.nih.gov/geo/>)⁴⁵. The ‘GSE’ codes given below are the unique IDs for each dataset. The relevant subsets of the conditions used in this study are indicated individually below. Raw microarray data were normalized using the ‘normalizeBetweenArrays’ function of the R/Bioconductor ‘limma’ package (<https://bioconductor.org/packages/release/bioc/html/limma.html>)⁴⁶. All microarray analyses are based on probes with the highest interquartile range (IQR).

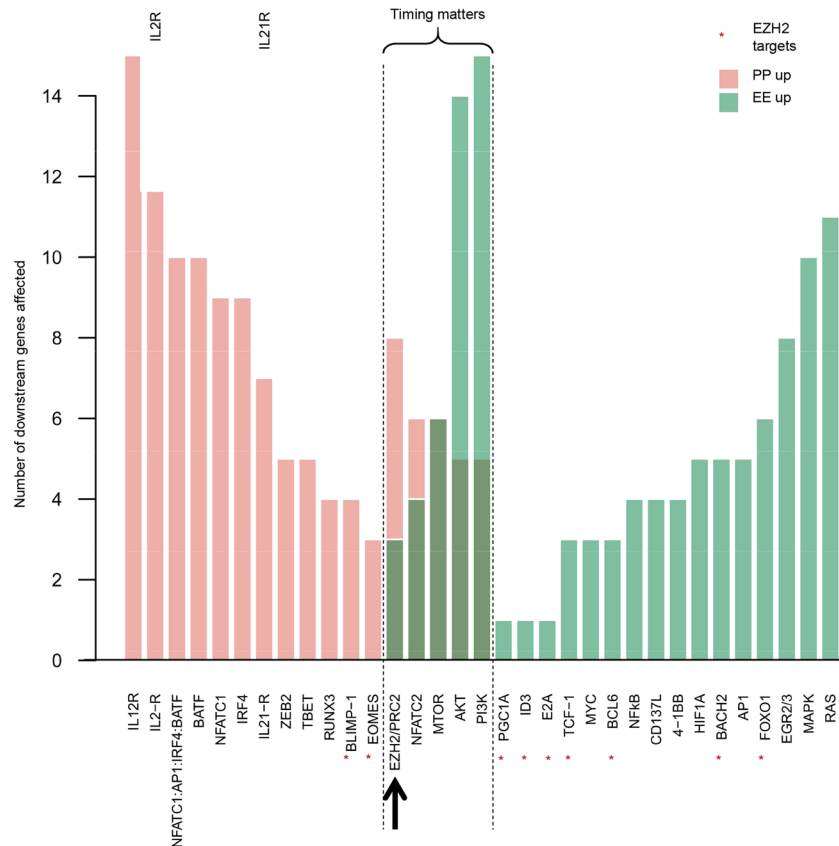


Figure 6. Model-based prediction of the effects of interfering with the activities of genes in the TCE network. For each gene listed, bar heights show the number of downstream genes that are affected by perturbation of the regulator gene. Affected gene counts are grouped into pro-PP (PP gene up-regulated or EE gene down-regulated) and pro-EE effects (EE gene up-regulated or PP gene down-regulated). Leaf nodes (i.e. genes with no downstream targets in the network), and genes within global feedback paths (e.g. the checkpoint receptors) are excluded. Of note, inhibiting the activity of a large majority of the genes in the TCE network results in exclusively pro-PP or pro-EE effects. But a number of genes, exemplified by *EZH2*, appear to have both pro-PP and pro-EE effects (as an example, *EZH2* targets are marked by *). As illustrated in Fig. 7a–c, these apparently contradictory effects are resolved when the activities of these genes are explored at finer time-resolutions.

Chronic infection datasets.

GSE41867 Doering *et al.*⁴⁷.

Platform Affymetrix Mouse Gene 1.0 ST Array.

Subset 26 experiments (3 naïve, 12 acute, 11 chronic).

GSE9650 Wherry *et al.*⁴⁸.

Platform Affymetrix Murine Genome U74A Version 2 Array.

Subset 15 experiments (4 Tex, 4 naïve, 7 acute).

GSE76279 Leong *et al.*¹².

Platform Illumina HiSeq. 1500 (*mus musculus*).

Subset 8 experiments (2 naïve, 3 CXCR5⁺, 3 CXCR5⁻).

GSE74148 He *et al.*¹¹.

Platform Illumina HiSeq. 2000 (*mus musculus*).

Subset 4 experiments (1 naïve, 1 acute, 1 CXCR5⁺, 1 CXCR5⁻).

GSE84105 Im *et al.*¹⁰.

Platform Affymetrix Mouse Genome 430 2.0 Array.

Subset 8 experiments (2 naïve, 3 CXCR5⁺, 3 CXCR5⁻).

Cancer datasets.

GSE24536 Baitsch *et al.*⁴⁹ (melanoma).

Platform Agilent-014850 Whole Human Genome Microarray 4 × 44K G4112F.

Subset 20 experiments (7 tumor-infiltrating lymph node, 13 naïve).

GSE84072 Gravelle *et al.*⁵⁰ (follicular lymphoma).

Platform Affymetrix Human Gene 2.0 ST Array.

Subset 6 experiments (3 TIM3⁺, 3 TIM3⁻).

GSE89307 Philip *et al.*⁹ (mouse autochthonous liver cancer model).

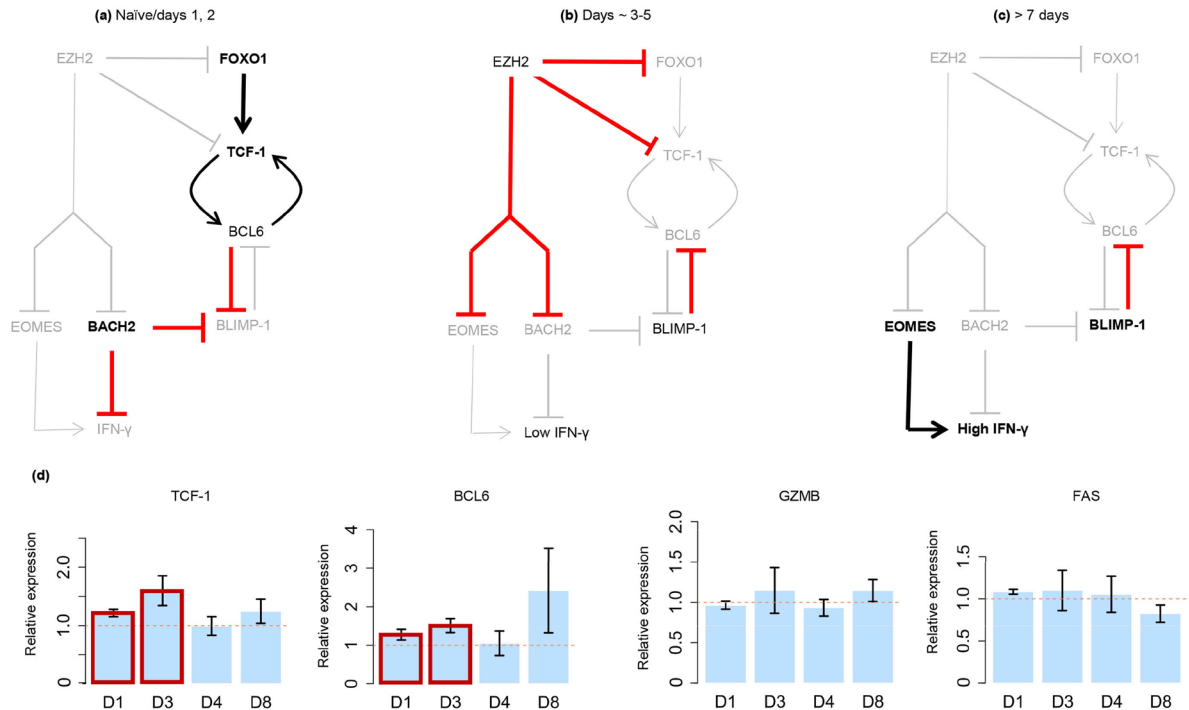


Figure 7. Prediction of the effect of EZH2 inhibition on T cell exhaustion (TCE). The networks in panels (a–c) show 3 distinct states that the primary targets of EZH2/PRC2 adopt following TCR stimulation, and reveal that EZH2 has pro-PP effects at all times. (a) Although *EZH2* transcription peaks at about 1 day post-stimulation, its repressive effects (via PRC2) are not apparent until around Day 3 post-infection. PRC2 is not active in naïve CD8⁺ cells, or during the earliest days post-stimulation. During this time, FOXO1 drives TCF-1 (pro-PP state) expression, and BACH2 represses the pro-EE state gene *BLIMP-1*. (b) At around 3–5 days post-infection, EZH2/PRC2 inhibit FOXO1, BACH2, and TCF-1, allowing the expression of the pro-EE gene *BLIMP-1*. In turn, *BLIMP-1* represses the pro-PP gene *BCL6*. Concurrent with these events, EZH2 inhibition blocks early expression of the EE gene *EOMES*. Thus, inhibition of EZH2 during this period will block/delay the onset of the EE state. (c) *EZH2* transcription returns to basal levels by about 7 days post-infection, allowing *EOMES* to become activated and drive high (EE state) IFN- γ expression. (d) Experimental evidence supporting the pro-PP predicted effect of EZH2 inhibition in human peripheral blood T cells (average of 3 donors and 3 technical replicates per donor). Shown are the relative mRNA levels (treatment relative to no-treatment) of the pro-PP genes *TCF-1* and *BCL6*, and the EE marker genes *GZMB* and *FAS* as measured by RT qPCR at days 1, 3, 4, and 8 post-infection (D1 to D8). As predicted, both *TCF-1* and *BCL6* are up-regulated in the early days post-infection (red boxes), while *GZMB* and *FAS* expression levels show no significant change. Error bars mark ± 1 standard error.

Platform Illumina HiSeq 2500 (*mus musculus*).

Subset 21 experiments (3 replicates of CD8⁺ cells: naïve, day 5 acute, day 7 acute, day 5 tumor, day 7 tumor, day 14 tumor, day 21 tumor)

GSE98638 Zheng *et al.*⁸ (human hepatocellular carcinoma).

Platform Illumina HiSeq 2500 (*homo sapiens*).

Subset Single cell RNA-seq for 6 samples (5063 cells in total).

Acute infection time course data.

GSE15907 Painter *et al.*⁵¹. (Immunological Genome Project data Phase 1).

Platform Affymetrix Mouse Gene 1.0 ST Array.

Subset 39 experiments (3 replicates each of naïve, and effector CD8⁺ cells at multiple times points for 2 antigens).

Construction of the literature-based TCE network. The large-scale network of regulatory interactions underlying CD8⁺ TCE was manually curated from reports in publications released before August 2017, focusing on genes reported by multiple publications, as well as genes with small-scale (non-‘omics’) experimental support in a single paper. For brevity, only key publications are cited. In situations where different transcripts or protein isoforms may be involved, all isoforms were included with a view to evaluating them using expression data.

The 64-node reduced/simplified TCE network was extracted and curated manually by one co-author, and then independently verified on an interaction-by-interaction and citation-by-citation level by a second co-author.

Network visualization. Both the large-scale TCE network, and its simplified version were visualized using the RCyjs (<http://bioconductor.org/packages/release/bioc/html/RCyjs.html>).

Expression data were superimposed onto the large-scale TCE network using Rcyjs. Fold changes were calculated with respect to naïve CD8⁺ T cells and mapped to a color-scale as shown. Edge (line) thicknesses are proportional to the fraction of observations in which the source and target genes in an edge have fold changes concordant with the sense of the interaction ('promoting' or 'inhibiting'). Thus, the auto-regulatory loop of NFATC1 – by definition – has maximum thickness. In some instances, edges were highly concordant (good agreement between the network model and data) in one dataset or condition, and not in another.

Network evaluation by concordance matching. For each edge (interaction) in the TCE network, the fraction of times when the source and target genes in an edge had fold changes concordant with the sense of the interaction ('promoting' or 'inhibiting') were calculated. To account for variability in the data, fold changes were calculated *per replicate* data (instead of averaging data across all replicates). Thus, data for 2 replicates across 2 conditions generated 4 possible comparisons with potential average concordance values of (0.00, 0.25, 0.50, 0.75, 1.00).

To explore the statistical significance of the observed edge concordance values, 500,000 edges were generated with randomly assigned gene labels and interaction types. Next, the fraction of times an edge was concordant in a given dataset for the TCE and randomized (control) networks was calculated. Concordant edges occurred by chance in 14.8% of randomized controls, suggesting a false discovery rate of ~15%.

State tracking by PCA. To compare the TCE network state changes among different CD8⁺ T cell subsets, PCA was performed for each dataset using the normalized expression levels of all the genes in the TCE network. The relative positions of any 2 CD8⁺ cell subtypes on a plot of the first 2 components reflect their similarities/differences in expression of the TCE network genes and show similar state trajectories for responses to acute and chronic stimulation.

Evaluation of cellular metabolic activity using transcriptional signatures. A set of marker regulatory genes per pathway were manually derived to explore metabolic changes in activated and exhausted CD8⁺ cells. Metabolic pathways typically comprise 3 topological features: metabolic transformation chains, incoming (joining) paths, and outgoing (forking) paths. We focused on marker genes that regulate metabolic transformation chains, because such genes are more likely to be highly correlated.

Metabolic marker regulatory genes.

hemeBioGenesis ALAD, ALAS1, ALAS2, CPOX, FECH, HMBS, PPOX, UROD, UROS

FattyAcidOxidation AMPK, PPARG, PPARGC1A, CPT1A

aaMetabolism SLC7A5, SLC3A2, SLC38A2, SLC1A5, SLC38A1

glycolysis PFKF, PGAM1, HK1, HK2, PKM2, PKM, LDHA, SLC2A1, SLC16A1, SLC16A3

gluconeogenUP FOXO1, G6PC, G6PC3, PCK1, PCK2, PPARGC1A, CREB1

gluconeogenDN PPARG

lipidBioGenUP SREBP1, SREBF1, LDLR, HMGCR

lipidBioGenDN ABCA1

oxphos NDUFAF2, NDUFA1, NDUFA2, NDUFA3, NDUFA4, NDUFA5, NDUFA6, NDUFA7, NDUFA8, NDUFA9, NDUFA10, NDUFA11, NDUFA12, NDUFA13, COX6C

TCA ACS1, CPT1A, ACO1, ACO2, CS, DLAT, DLD, DLST, FH1, IDH2, IDH3A, IDH3B, IDH3G, MDH2, OGDH, OGDHL, PCK1, PCK2, PDHA1, PDHA2, PDHB, SDHA, SDHB, SDHC, SDHD, SUCLA2, SUCLG1, SUCLG2

glutaminoLysis SLC1A5, SLC7A5, GLS, GLUD1

As a marker of CD8⁺ T effector function, an IFNG signature was also included in our analyses:

IFNG IFNG, GZMB, PRF1, PDCD1

Calculating metabolic pathway signatures. Expression data were first averaged per gene across replicates, and then averaged across marker genes per pathway. For pathways with a known repressor, the average expression score was normalized by the average expression of the known repressors. To facilitate visual comparisons across datasets, all activity scores were scaled to the range (0, 1) across time points/conditions. Finally, metabolic activity heatmaps were generated using the R package 'pheatmap' (<https://cran.r-project.org/web/packages/pheatmap/index.html>).

Expression cluster analysis. Expression clustering of time course data was performed using the 'soft clustering' method of the Bioconductor/R package 'Mfuzz' (<https://www.bioconductor.org/packages/release/bioc/html/Mfuzz.html>)⁵². Soft clustering is an unsupervised approach that allows a single gene to potentially be a member of multiple clusters. In initial explorations, the number of clusters generated by Mfuzz was varied to find the number of clusters that was large enough to result in at least 1 cluster with few members and with at least 2 clusters showing visually similar profiles. These criteria ensure that each expression cluster is tightly defined with a highly correlated set of genes while keeping the number of clusters low. Forty-nine clusters met these requirements across all datasets.

Mfuzz performs clustering on mean-centered and scaled expression profiles (Z-scores). Thus, genes are grouped by their relative change in expression, rather than absolute level of expression. In a post-processing step, we confirmed that genes of interest identified through Mfuzz clustering (e.g. CD200R1) had significant absolute expression levels and fold changes.

Logic simulation. Logic simulation was initially explored using the well-established GINsim (<http://gin-sim.org/>)^{53,54} and booleannet (<https://github.com/ialbert/booleannet>)⁵⁵ simulators. However, logic simulators are designed to explore network steady states, and certain characteristics of the trajectories among these states. As previously noted, the acute and chronic CD8⁺ T cell responses of interest to us comprise specific sequences of *transitory* states with defined transition trajectories. To enable more flexible exploration of such state changes in diverse alternate models, we implemented our network models as a series of logic statements that are executed in a specific order derived from published data and reports.

The R code corresponding to the simulation results shown in Supplementary Figs. S17–20 is given below. This model is one of many alternate models that were explored, and is presented only as an illustrative example. Here, ‘S’ (representing the network state) is a vector of gene activity levels. The symbols ‘&’, ‘|’ and ‘!’ represent logical AND, OR and NOT operators respectively. ‘prevS1’ and ‘prevS2’ are the states of the network at 1 and 2 steps earlier. Genes whose activity depends on earlier network states undergo delayed state changes. The R language symbols “<”, “>”, and “=” indicate value assignments, and “==” tests equivalence.

```
allStates = S; TIME = 0
while(!identical(prevS2, S)) {

  TIME <- TIME + 1
  if (TIME == 2) prevS1 = S else if (TIME > 2) {
    prevS2 <- prevS1
    prevS1 <- S
  }
  AKA
  S['TCR'] <- ( S['TCR'] & !S['PD1'] )
  S['IL2'] = S['IL21'] = S['IL12'] <- S['TCR']

  S['FOXO1'] <- ( !S['IL2'] & !S['AKTAKT'] ) & ( prevS2['TCR'] | prevS2['STAT3'] )
  S['AKT'] <- ( S['TCR'] & !S['PD1'] )

  S['NR4A1'] <- S['NFATC1'] | S['PD1']
  S['PD1'] <- ( ( prevS2['AP1'] & prevS1['AP1'] & S['AP1'] ) | ['FOXO1'] ) | S['NFATC1'] )

  S['AP1.DNA'] <- ( prevS1['AP1'] | prevS2['AP1'] | S['AP1'] ) & !S['BCL6']
  S['BLIMP1'] <- ( S['BATF.IRF4'] | S['IL2'] | S['AP1.DNA'] )

  S['IRF4'] <- ( S['NFkB'] & !S['NR4A1'] )
  S['BCL6'] <- ( ( S['FOXO1'] | S['BATF'] ) & ! S['IRF4'] )
  S['BCL6'] -> S['TCF1']

  S['BATF.IRF4'] <- ( S['BATF'] & S['TCR'] )
  S['BATF'] <- ( S['IL12'] | S['IL21'] )

  S['IL2'] <- ( S['IL2'] & !S['FOXO1'] )

  S['NFATC1'] <- ( prevS2['NFATC1.med'] | prevS1['NFATC1'] )
  S['NFATC1.med'] <- prevS2['NFATC1.lo']
  S['NFATC1.lo'] <- prevS2['NFATC2']

  S['IFNg'] <- ( S['NFATC2'] & S['AP1'] & !S['TCF1'] )

  S['TCR'] -> S[c( 'NFkB', 'NFATC2', 'AP1' )]
  S['AP1'] <- S['TCR'] | S['AP1']
  S['AKT'] -> S['mTOR'] -> S['glycolysis']
  S['STAT3'] <- prevS1['IL21']

  allStates <- rbind(allStates, S)
}
```

To assess the robustness of the logic models, we assessed how often a model (Set of logic functions) passed through the same set of transitory states (and in the same order) when node update assignments were randomized. As an example, the above model passed through the same set of transitory states, in the same order as the above order of statements, in 28 randomized update runs out of 10,000, suggesting the model's state trajectory is highly dependent on the specified update sequence and time delays.

To visualize the simulation results, the gene states at the end of each update cycle of the simulation were mapped to a network diagram generated using the online tool 'PathwayMapper' (<http://pathwaymapper.org/>)⁵⁶.

Network motif analysis. Combined results from 4 motif detection tools were manually curated to extract network motifs from the network:

- (i) mfinder (<http://www.weizmann.ac.il/mcb/UriAlon/download/network-motif-software>)⁵⁷
- (ii) The Cytoscape 'Motif-Discovery' app (<http://apps.cytoscape.org/apps/motifdiscovery>)⁵⁸.
- (iii) FANMOD (<http://theinfl.informatik.uni-jena.de/motifs/>)⁵⁹.
- (iv) MAVisto (<http://mavisto.ipk-gatersleben.de/>)⁶⁰.

The above tools provide comprehensive lists of all motif occurrences, but become increasingly unwieldy for motifs with more than a handful of genes. Feed-forward and feedback loops in our network involving multiple steps (gene-gene interactions/network edges) were added manually to the list of found motifs by one author, and then independently verified by two co-authors.

Differential equation modeling. The robustness and speed up properties of negative feedback illustrated in Supplementary Fig. S26 are adapted from analyses reported by Rosenfeld *et al.*⁶¹, and in Uri Alon's book²³.

The ordinary differential equation (ODE) model of the network kinetics (Fig. 5) was simulated using Berkeley Madonna (<https://berkeley-madonna.myshopify.com/>). The model listing is given below (Statements following the “;” symbols are descriptive comments not executed by the simulator). Model parameters were selected arbitrarily for purely illustrative purposes.

```

METHOD RK4                ; ODE solver
STARTTIME                 = 0
STOPTIME                  = 100        ; duration of simulation
DT                         = 0.01     ; solver timestep

k                          = 100      ; pseudo parameter for rapid TCR kinetics

init TCR                  = 0          ; TCR is inactive at start
init PD1                  = 0          ; PD-1 is inactive at start
init M                    = 1          ; BCL6/TCF-1/pro-MPEC activity is on in resting cells
init Blimp1               = 0          ; BLIMP-1 pro-differentiation/effector activity is off
init C                    = 0          ; IL2/12/21/IFNg cytokine signaling is off at start

Ag = SQUAREPULSE(0, 75)   ; Antigen activity duration (set to 25 or 75 'hours')

TCR = k * Ag / (1 + PD1^2) - k * TCR    ; TCR complex activity
PD1 = 0.05 * TCR - 0.02 * PD1           ; Inhibitory receptor activation
M   = TCR / (1 + Blimp1^2 + C^3) - M     ; pro-memory drivers BCL6 & TCF-1
C   = 0.2*Ag^2 / (1 + Ag^2) - 0.1*C     ; IL2/12/21/IFNg signaling & PRC2
Blimp1= C / (1 + M^2) - Blimp1          ; Blimp-1 (effector state marker)

```

Model-based prediction of perturbation effects. To quantify the effects of knocking down the activity of individual genes in our network (e.g. via targeted drugs), we used the R package iGraph (<http://igraph.org/r/>) to calculate all paths through our network model. Feedback loops that impact TCR-signaling activity (e.g. inhibitory immune receptors) were excluded from this analysis because they affect all downstream genes.

Prediction of impacts using only network topology can be misleading for genes that perform distinct functions at different times (see Fig. 7 and related text). In particular, a target gene can appear to be both activated and repressed by an upstream regulator. For example, in naïve CD8⁺ T cells, ID3 represses CXCR5 activation by E2A. But following stimulation, ID3 activates CXCR5 expression. Regulatory interactions that could not be time-resolved due to lack of time course data were excluded from our analyses.

In vitro T cell cultures. Peripheral blood mononuclear cells purchased from Bloodworks Northwest (Seattle, WA) that requires informed consent from their donors. Total T cells were isolated from peripheral blood mononuclear cells from 3 human donors via negative selection (STEMCELL Technologies Inc., cat. no. 19051) and plated in anti-CD3 (BD Pharmingen clone UCHT1, cat. no. 555329) pre-coated (10 µg/ml in PBS overnight at 4 °C) 96-well round bottom plates at 100,000 cells per well in RPMI1640, 10% FBS, 0.1 mM NEAA, 1 mM Na pyruvate, 5 ng/ml anti-CD28 (eBiosciences clone CD28.2, cat. no. 16-0289-85), alone or with 5 µM (reported), 0.5 µM (not shown) EZH2 inhibitor, CPI-169 (APExBio B4678) or DMSO. The same volume of EZH2 inhibitor and DMSO was added to each well to control for any DMSO effect. T cells were cultured at 37 °C, 5% CO₂. T cells were harvested on days 1, 3, 4, 8, washed in PBS and re-suspended in 350 µl RLT (Qiagen cat. no. 74136) and stored at –80 °C for future RNA isolation (Qiagen cat. no. 74136). Total T cells were also sampled and processed as other cultures on the day of isolation (day 0) and after 24 hours of incubation with 10 ng/ml human interleukin-7 (R&D Systems, cat. no. 207-IL-025) as controls for gene expression analysis. All experiments were performed according to Celgene Corporate EHS (Environmental Health and Safety) Policies and Directives.

RNA isolation and cDNA reverse transcription. RNA was isolated from all samples using Qiagen kit (Qiagen cat. no. 74136) and quantitated on a Nanodrop 2000 spectrophotometer (ThermoScientific). 1.5 µg RNA was reverse transcribed into cDNA as per protocol (Applied Biosystems cat. no. 4368814).

Quantitative real-time PCR. qRT-PCR was performed using TaqMan Fast Advanced Master Mix (Applied Biosystems cat. no. 4444557) in a ViiA7 system (Applied Biosystems) using Applied Biosystems primers. Gene expression was quantified as per Livak & Schmittgen⁶² normalized to GUSB. All measurements were performed in triplicate.

Data availability

All data analyzed in this manuscript have been previously published and are available publicly, as described in the Methods.

Code availability

All R scripts used to carry out the analysis in this manuscript are freely available at GitHub (<https://github.com/hamid-bolouri/TCE>).

Received: 30 May 2019; Accepted: 17 January 2020;

Published online: 05 February 2020

References

- Thommen, D. S. & Schumacher, T. N. T cell dysfunction in cancer. *Cancer Cell* **33**, 547–562 (2018).
- Wherry, E. J. & Kurachi, M. Molecular and cellular insights into T cell exhaustion. *Nat. Rev. Immunol.* **15**, 486–499 (2015).
- Marin-Acevedo, J. A., Soyano, A. E., Dholaria, B., Knutson, K. L. & Lou, Y. Cancer immunotherapy beyond immune checkpoint inhibitors. *J. Hematol. Oncol.* **11**, 8 (2018).
- Hassel, J. C. *et al.* Combined immune checkpoint blockade (anti-PD-1/anti-CTLA-4): evaluation and management of adverse drug reactions. *Cancer Treat. Rev.* **57**, 36–49 (2017).
- Bonifant, C. L., Jackson, H. J., Brentjens, R. J. & Curran, K. J. Toxicity and management in CAR T-cell therapy. *Mol. Ther. Oncolytics* **3**, 16011 (2016).
- Ghoneim, H. E., Zamora, A. E., Thomas, P. G. & Youngblood, B. A. Cell-intrinsic barriers of T cell-based immunotherapy. *Trends Mol. Med.* **22**, 1000–1011 (2016).
- Singer, M. *et al.* A distinct gene module for dysfunction uncoupled from activation in tumor-infiltrating T cells. *Cell* **166**, 1500–1511.e9 (2016).
- Zheng, C. *et al.* Landscape of infiltrating T cells in liver cancer revealed by single-cell sequencing. *Cell* **169**, 1342–1356.e16 (2017).
- Philip, M. *et al.* Chromatin states define tumour-specific T cell dysfunction and reprogramming. *Nature* **545**, 452–456 (2017).
- Im, S. J. *et al.* Defining CD8⁺ T cells that provide the proliferative burst after PD-1 therapy. *Nature* **537**, 417–421 (2016).
- He, R. *et al.* Follicular CXCR5-expressing CD8⁺ T cells curtail chronic viral infection. *Nature* **537**, 412–428 (2016).
- Leong, Y. A. *et al.* CXCR5⁺ follicular cytotoxic T cells control viral infection in B cell follicles. *Nat. Immunol.* **17**, 1187–1196 (2016).
- Fuertes Marraco, S. A., Neubert, N. J., Verdeil, G. & Speiser, D. E. Inhibitory receptors beyond T cell exhaustion. *Front. Immunol.* **6**, 310 (2015).
- McKinney, E. F. & Smith, K. G. C. Metabolic exhaustion in infection, cancer and autoimmunity. *Nat. Immunol.* **19**, 213–221 (2018).
- Buck, M. D., Sowell, R. T., Kaech, S. M. & Pearce, E. L. Metabolic instruction of immunity. *Cell* **169**, 570–586 (2017).
- Kornberg, M. D. *et al.* Dimethyl fumarate targets GAPDH and aerobic glycolysis to modulate immunity. *Science* **360**, 449–453 (2018).
- Misstear, K. *et al.* Suppression of antigen-specific T cell responses by the Kaposi's sarcoma-associated herpesvirus viral OX2 protein and its cellular orthologue, CD200. *J. Virol.* **86**, 6246–6257 (2012).
- Rosenblum, M. D. *et al.* CD200 is a novel p53-target gene involved in apoptosis-associated immune tolerance. *Blood* **103**, 2691–2698 (2004).
- Rijkers, E. S. *et al.* The inhibitory CD200R is differentially expressed on human and mouse T and B lymphocytes. *Mol. Immunol.* **45**, 1126–1135 (2008).
- Zemans, R. L. Neutrophil-mediated T-cell suppression in influenza: novel finding raising additional questions. *Am. J. Respir. Cell Mol. Biol.* **58**, 423–425 (2018).
- Caserta, S. *et al.* Chronic infection drives expression of the inhibitory receptor CD200R, and its ligand CD200, by mouse and human CD4 T cells. *PLoS One* **7**, e35466 (2012).
- Rygiel, T. P. *et al.* Lack of CD200 enhances pathological T cell responses during influenza infection. *J. Immunol.* **183**, 1990–1996 (2009).
- Alon, U. *An Introduction to Systems Biology: Design Principles of Biological Circuits* (Chapman & Hall/CRC, Boca Raton, FL, 2006).
- Bolouri, H. *Computational Modeling of Gene Regulatory Networks – a Primer* (Imperial College Press, London, 2008).
- Wang, C., Singer, M. & Anderson, A. C. Molecular dissection of CD8⁺ T-cell dysfunction. *Trends Immunol.* **38**, 567–576 (2017).

26. Goentoro, L., Shoval, O., Kirschner, M. W. & Alon, U. The incoherent feedforward loop can provide fold-change detection in gene regulation. *Mol. Cell* **36**, 894–899 (2009).
27. Hess Michelini, R., Doedens, A. L., Goldrath, A. W. & Hedrick, S. M. Differentiation of CD8 memory T cells depends on Foxo1. *J. Exp. Med.* **210**, 1189–1200 (2013).
28. Delpoux, A., Lai, C. Y., Hedrick, S. M. & Doedens, A. L. FOXO1 opposition of CD8⁺ T cell effector programming confers early memory properties and phenotypic diversity. *Proc. Natl. Acad. Sci. USA* **114**, E8865–E8874 (2017).
29. Gray, S. M., Amezquita, R. A., Guan, T., Kleinstein, S. H. & Kaech, S. M. Polycomb repressive complex 2-mediated chromatin repression guides effector CD8⁺ T cell terminal differentiation and loss of multipotency. *Immunity* **46**, 596–608 (2017).
30. Kakaradov, B. *et al.* Early transcriptional and epigenetic regulation of CD8⁺ T cell differentiation revealed by single-cell RNA sequencing. *Nat. Immunol.* **18**, 422–432 (2017).
31. Kirchhoff, S. *et al.* Viral IFN-regulatory factors inhibit activation-induced cell death via two positive regulatory IFN-regulatory factor 1-dependent domains in the CD95 ligand promoter. *J. Immunol.* **168**, 1226–1234 (2002).
32. Roychoudhuri, R. *et al.* BACH2 regulates CD8⁺ T cell differentiation by controlling access of AP-1 factors to enhancers. *Nat. Immunol.* **17**, 851–860 (2016).
33. Tsukumo, S. *et al.* BACH2 maintains T cells in a naive state by suppressing effector memory-related genes. *Proc. Natl. Acad. Sci. USA* **110**, 10735–10740 (2013).
34. Snow, A. L., Pandiyan, P., Zheng, L., Krummey, S. M. & Lenardo, M. J. The power and the promise of restimulation-induced cell death in human immune diseases. *Immunol. Rev.* **236**, 68–82 (2010).
35. Hannier, S., Tournier, M., Bismuth, G. & Triebel, F. CD3/TCR complex-associated lymphocyte activation gene-3 molecules inhibit CD3/TCR signaling. *J. Immunol.* **161**, 4058–4065 (1998).
36. Anderson, A. C., Joller, N. & Kuchroo, V. K. Lag-3, Tim-3, and TIGIT: co-inhibitory receptors with specialized functions in immune regulation. *Immunity* **44**, 989–1004 (2016).
37. Joller, N. *et al.* Cutting edge: TIGIT has T cell-intrinsic inhibitory functions. *J. Immunol.* **186**, 1338–1342 (2011).
38. Murphy, K. M., Nelson, C. A. & Sedý, J. R. Balancing co-stimulation and inhibition with BTLA and HVEM. *Nat. Rev. Immunol.* **6**, 671–681 (2006).
39. Kamphorst, A. O. *et al.* Rescue of exhausted CD8 T cells by PD-1-targeted therapies is CD28-dependent. *Science* **355**, 1423–1427 (2017).
40. Hui, E. *et al.* T cell costimulatory receptor CD28 is a primary target for PD-1-mediated inhibition. *Science* **355**, 1428–1433 (2017).
41. He, S. *et al.* Ezh2 phosphorylation state determines its capacity to maintain CD8⁺ T memory precursors for antitumor immunity. *Nat. Commun.* **8**, 2125 (2017).
42. Youngblood, B. *et al.* Effector CD8 T cells dedifferentiate into long-lived memory cells. *Nature* **552**, 404–409 (2017).
43. Bengsch, B. *et al.* Epigenomic-guided mass cytometry profiling reveals disease-specific features of exhausted CD8 T cells. *Immunity* **48**, 1029–1045.e5 (2018).
44. Gattinoni, L. *et al.* Wnt signaling arrests effector T cell differentiation and generates CD8⁺ memory stem cells. *Nat. Med.* **15**, 808–813 (2009).
45. Barrett, T. *et al.* NCBI GEO: mining tens of millions of expression profiles—database and tools update. *Nucleic Acids Res.* **35**, D760–765 (2007).
46. Ritchie, M. E. *et al.* limma powers differential expression analyses for RNA-sequencing and microarray studies. *Nucleic Acids Res.* **43**, e47 (2015).
47. Doering, T. A. *et al.* Network analysis reveals centrally connected genes and pathways involved in CD8⁺ T cell exhaustion versus memory. *Immunity* **37**, 1130–1144 (2012).
48. Wherry, E. J. *et al.* Molecular signature of CD8⁺ T cell exhaustion during chronic viral infection. *Immunity* **27**, 670–684 (2007).
49. Baitsch, L. *et al.* Exhaustion of tumor-specific CD8⁺ T cells in metastases from melanoma patients. *J. Clin. Invest.* **121**, 2350–2360 (2011).
50. Gravelle, P. *et al.* Impaired functional responses in follicular lymphoma CD8⁺TIM-3⁺ T lymphocytes following TCR engagement. *Oncoimmunology* **5**, e1224044 (2016).
51. Painter, M. W., Davis, S., Hardy, R. R., Mathis, D. & Benoist, C. Immunological Genome Project Consortium, transcriptomes of the B and T lineages compared by multiplatform microarray profiling. *J. Immunol.* **186**, 3047–3057 (2011).
52. Kumar, L. & E. Futschik, M. Mfuzz: A software package for soft clustering of microarray data. *Bioinformatics* **2**, 5–7 (2007).
53. Gonzalez, A. G., Naldi, A., Sánchez, L., Thieffry, D. & Chaouiya, C. GINsim: A software suite for the qualitative modelling, simulation and analysis of regulatory networks. *Biosystems* **84**, 91–100 (2006).
54. Naldi, A. *et al.* Logical modelling of regulatory networks with GINsim 2.3. *Biosystems* **97**, 134–139 (2009).
55. Albert, I., Thakar, J., Li, S., Zhang, R. & Albert, R. Boolean network simulations for life scientists. *Source Code Biol. Med.* **3**, 16 (2008).
56. Bahceci, I. *et al.* PathwayMapper: a collaborative visual web editor for cancer pathways and genomic data. *Bioinformatics* **33**, 2238–2240 (2017).
57. Kashtan, N., Itzkovitz, S., Milo, R. & Alon, U. Efficient sampling algorithm for estimating subgraph concentrations and detecting network motifs. *Bioinformatics* **20**, 1746–1758 (2004).
58. Shannon, P. *et al.* Cytoscape: a software environment for integrated models of biomolecular interaction networks. *Genome Res.* **13**, 2498–2504 (2003).
59. Wernicke, S. & Rasche, F. FANMOD: a tool for fast network motif detection. *Bioinformatics* **22**, 1152–1153 (2006).
60. Schreiber, F. & Schwöbbermeyer, H. MAVisto: a tool for the exploration of network motifs. *Bioinformatics* **21**, 3572–3574 (2005).
61. Rosenfeld, N., Elowitz, M. B. & Alon, U. Negative autoregulation speeds the response times of transcription networks. *J. Mol. Biol.* **323**, 785–793 (2002).
62. Livak, K. J. & Schmittgen, T. D. Analysis of relative gene expression data using real-time quantitative PCR and the 2^{(-Delta Delta C(T))} method. *Methods* **25**, 402–408 (2001).
63. Kim, E. H. *et al.* Signal integration by Akt regulates CD8 T cell effector and memory differentiation. *J. Immunol.* **188**, 4305–4314 (2012).

Acknowledgements

The authors received editorial support, provided by Excerpta Medica, supported by Bristol-Myers Squibb. The authors are fully responsible for all content and editorial decisions. This study was funded by Celgene, a wholly-owned subsidiary of Bristol-Myers Squibb, in part through a Sponsored Research Award to H.B.

Author contributions

H.B., M.T., D.B., and A.R. designed the research. H.B. performed all data processing and analyses in consultation with all other authors. H.B., B.F., P.T.S., A.D., M.T., D.B., and A.R. provided data analysis and modeling insights. L.H., C.C.S., and H.B. performed sensitivity analyses. J.B., M.Y., C.M.H., A.V.V., and P.S. provided immunological insights. R.J., M.Y., and J.B. performed validation experiments. H.B. wrote the initial version of the manuscript. All authors edited the final version of the manuscript.

Competing interests

H.B., L.H., and P. Shannon declare no competing interests. M.Y., J.B., R.J., B.F., C.C.S., C.M.H., A.-R.v.d.V.d.V., A.D., P. S., D.B., and A.R. declare employment at and equity ownership in Bristol-Myers Squibb. M.T. declares employment at and equity ownership in Celgene Research SL (Spain), a Bristol-Myers Squibb Company.

Additional information

Supplementary information is available for this paper at <https://doi.org/10.1038/s41598-020-58600-8>.

Correspondence and requests for materials should be addressed to H.B. or A.R.

Reprints and permissions information is available at www.nature.com/reprints.

Publisher's note Springer Nature remains neutral with regard to jurisdictional claims in published maps and institutional affiliations.



Open Access This article is licensed under a Creative Commons Attribution 4.0 International License, which permits use, sharing, adaptation, distribution and reproduction in any medium or format, as long as you give appropriate credit to the original author(s) and the source, provide a link to the Creative Commons license, and indicate if changes were made. The images or other third party material in this article are included in the article's Creative Commons license, unless indicated otherwise in a credit line to the material. If material is not included in the article's Creative Commons license and your intended use is not permitted by statutory regulation or exceeds the permitted use, you will need to obtain permission directly from the copyright holder. To view a copy of this license, visit <http://creativecommons.org/licenses/by/4.0/>.

© The Author(s) 2020