

Providence

Providence Digital Commons

Articles, Abstracts, and Reports

4-2024

Developing a Health Equity-Minded Curriculum: The Impacts of Cancer Care

Leanna Ross

Providence Clinical Academy

Camille Ashley

Providence Clinical Academy

Julianne Luttrell

Providence Nursing Institute Clinical Academy

Krismae Jimenez

Providence Clinical Academy

Follow this and additional works at: <https://digitalcommons.providence.org/publications>



Part of the [Health Services Administration Commons](#), [Health Services Research Commons](#), and the [Nursing Commons](#)

Recommended Citation

Ross, Leanna; Ashley, Camille; Luttrell, Julianne; and Jimenez, Krismae, "Developing a Health Equity-Minded Curriculum: The Impacts of Cancer Care" (2024). *Articles, Abstracts, and Reports*. 8657. <https://digitalcommons.providence.org/publications/8657>

This Presentation is brought to you for free and open access by Providence Digital Commons. It has been accepted for inclusion in Articles, Abstracts, and Reports by an authorized administrator of Providence Digital Commons. For more information, please contact digitalcommons@providence.org.

The logo for the National Network of Public Defense (ANPD) features the letters 'ANPD' in a bold, dark blue, sans-serif font. The letter 'A' is stylized with a diagonal slash through it. The background consists of a light blue sky with white clouds and a pattern of small white dots.The main title 'ASPIRE 2024' is rendered in a large, bold, dark blue font. The letters 'A', 'S', 'I', and 'R' each have a small, colorful triangle (blue, green, orange, and green respectively) attached to their right side. The year '2024' is shown in a white, outlined font to the right of the word 'ASPIRE'. The background features a light blue sky with white clouds and a pattern of small white dots.

CONVENTION

Chicago, IL | April 09-12



ANPD

Developing a Health Equity-Minded Curriculum

The Impacts of Cancer Care



Providence
Nursing Institute



ASPIRE 2024

CONVENTION

Introductions



LEANNA ROSS
MSN, RN, NPD-
BC, MEDSURG-BC



CAMILLE ASHLEY
MSN, RN



**JULIANNE
LUTTRELL**
MS, RN, NPD-
BC, CNL



**KRISMAE
JIMENEZ**
MSN, RN, GERO-
BC, CHSE

Providence Clinical Academy



CONVENTION

Audience Poll

Where are you in
Developing a Health
Equity-Minded Education
Program?



About Providence



36K nurses



5m unique patients served



51 hospitals



1,000+ clinics



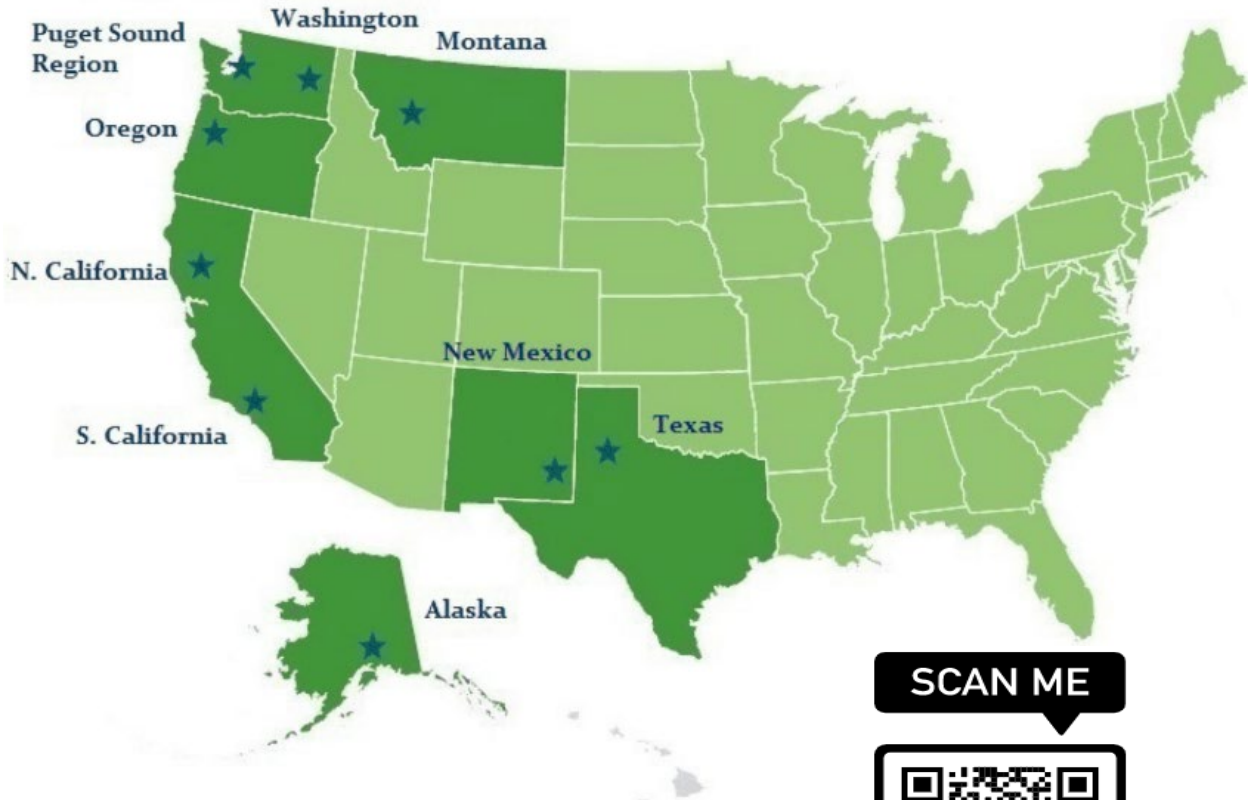
24 PTAP Accredited with Distinction



13 Magnet Designations



4 Pathways Designations

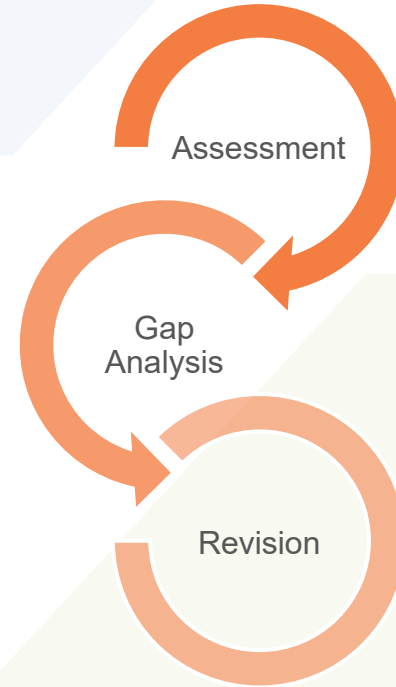


SCAN ME



Background

- Oncology Fellowship Program
 - Assessment in 2023
 - **Gap:** Integration of SDoH throughout the program
 - **Goal:** Asses SDoH and integrate to plan of care



Methods





Licensed Shutterstock ID 2249781495

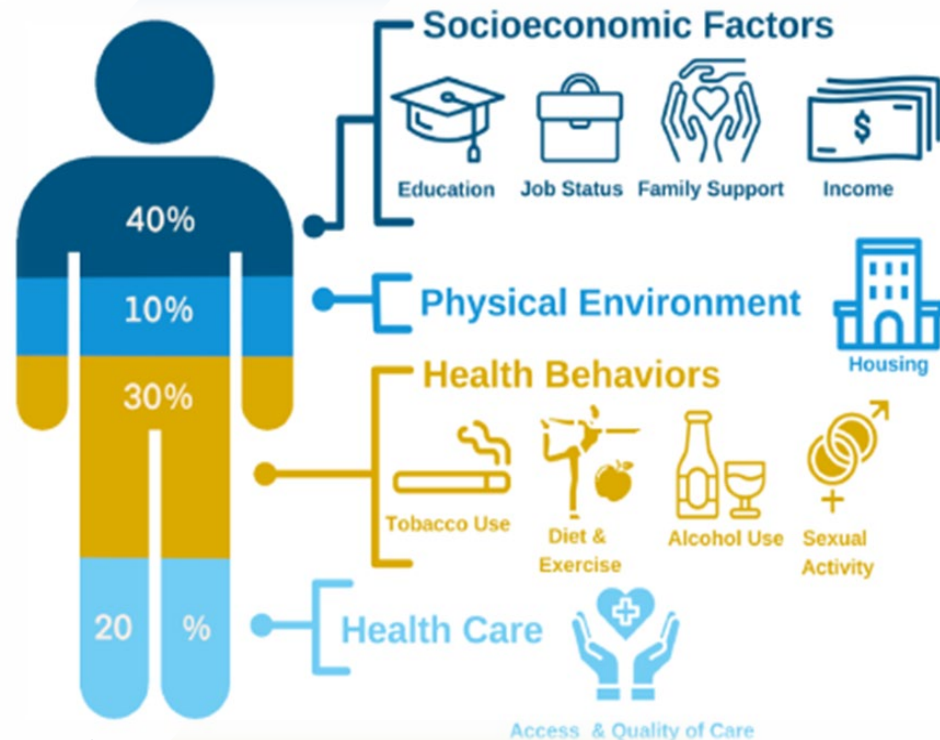
Revised curriculum includes:

- Pre-learning activities
- In-class discussion
- Case study
- VTS activity
- Taking it to the bedside

Methods

Looking at the Whole Picture

Social Determinants of Health:
Non-Medical Factors that
Influence Health Outcomes



Feedback from Learners & Leaders



“I like this activity and it was great to see that what you perceive may not be the patient’s feeling.”

“This could promote good conversation about health disparities!”

“I was engaged and enjoyed it. I was able to look at a bigger picture because I was comfortable.”

“Thank you! I enjoyed the activity!”

“I can definitely see myself facilitating this activity with my learners.”

“I loved it because I’m a visual learner!”



Lessons Learned

- Divided the curriculum for redesign in small workgroups
- Added SDoH in the Med/Surg/Tele program

Questions & Answers



Thank you!
Questions?

SCAN ME



shutterstock.com · 559451713



CONVENTION